



DK POMPA

Paslanmaz Dalgiç Pompa

5"-6"-7"-8"-9"-10" SUBMERSIBLE MOTORS



SLIMLINE MOTORS

SUBMERSIBLE



DK POMPA

P a s l a n m a z D a l g ı ç P o m p a

ÜSTÜNLÜKLER

Sıcak suya dayanıklı özel tel standart donanımında yer alır. Tekrar sarılabilmek için arıza tamir maliyetini azaltır. Yüksek verimiyle toplam satın alma maliyetini düşürür. Motorlar su ve glikol karışımıyla doldurulmuştur. (Donma noktası -15°C nin altındadır) Su yağlamalı radyal ve Kingsburry tipi eksenel yataklar bakım gerektirmez. İç ve dış ortam basıncının dengelemesi motorun altında yer alan kauçuk membran ve motorun üstünde yer alan basınç tapası vasıtasıyla gerçekleşir. %100 kalite kontrolü yapılır ve testten geçirilerek sevk edilir.

STANDART ÖZELLİKLER

5,5 HP - 30 HP Trifaze 380 V 50 Hz
Su soğutmalı
Dişey ve yatay konumda çalışabilir.
Gerilim toleransı $\pm 10\%$
Maksimum su sıcaklığı 30°C
Motor dönme hızı 2900 d/dk
Motor koruma sınıfı IP68
Sarılabilir motor class B
Yol verme sayısı saatte 20

OPSİYONLAR

Kablo boyu
Pt 100 ısı sensorü
60 Hz : 220 V - 380 V - 460 V - 220/380 V
50 Hz : 400 V - 415 V - 220/380 V
Güçlendirilmiş taban

ADVENTAGES

Hot water resistance special wires are in standard configuration. Rewindable stator reduce repair and maintenance costs. Reduce the total cost of ownership with high efficiency. Motors are filled with the mixture of water and glycol. (Freezing point is under -15°C) Maintenance-free water lubricated radial and axial (Kingsburry) bearings. Pressure balancing between inner and outer side with a rubber membrane at the bottom side and with a pressure plug at the top side of the motor. Quality control with %100 inspection and shipment after approval tests.

STANDARD SPECIFICATIONS

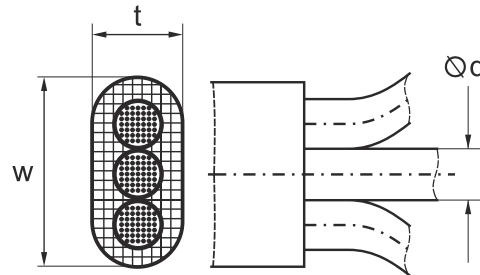
5,5 HP - 30 HP Three phase 380 V 50 Hz
Water lubricated
Operates both vertical and inclined
Voltage tolerance $\pm 10\%$
Max. water temperature 30°C
Speed 2900 rpm
Protection IP68
Rewindable class B insulation
Starts per hour : 20

OPTIONS

Cable Length
Pt 100 temperature sensor
60 Hz : 220 V - 380 V - 460 V - 220/380 V
50 Hz : 400 V - 415 V - 220/380 V
Fortified base

Kablo Ölçüleri / Cable Dimensions

Kablo Tipi Cable Type	Kalınlık Thickness	Genişlik Width	Çap Diameter
mm ²	(t) mm	(w) mm	(d) mm
3x2,5	7	147	3,8
3x4	7,5	16,5	4,1
3x6	9	19,5	4,8
3x10	10	24	6,3
3x16	11,5	27,6	7,35
3x25	13	31,5	9,2

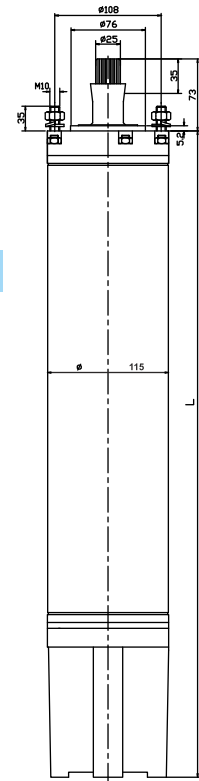


PERFORMANS TABLOSU / PERFORMANCE TABLE

Motor Tipi Motor Type	Güç Power		Frekans Frequency	Voltaj Voltage	Akım (A) Current (A)		Verim (η%) Efficiency (η%)				Güç Faktörü(COSφ) Power Factor (COSφ)				Devir Rotation (RPM)	Uzunluk Lenght mm	Ağırlık Weight kg
	kW	Hp			Hz	V	100%	115%	50%	75%	100%	115%	50%	75%			
DKM 5 K/5,5	5,5	4	50	380	11	12	61,1	67,9	73,6	73,4	0,58	0,7	0,78	0,82	2949	636	38
			60	380	10,3	11,5	60,2	66,0	70,6	70,7	0,75	0,82	0,86	0,88	3526		
			460	10,7	11,2	54,1	62,8	67,8	70,3	0,54	0,64	0,72	0,76	3553			
DKM 5 K/7,5	7,5	5,5	50	380	13	15	67,9	72,3	75,9	75,9	0,62	0,74	0,83	0,85	2913	636	38
			60	380	13	15	65,8	68,2	72,5	72,2	0,79	0,86	0,89	0,9	3522		
			460	12	14	60,3	67,2	72,9	72,0	0,61	0,72	0,79	0,82	3563			
DKM 5 K/10	10	7,5	50	380	16	18	73,5	77,6	76,5	77,5	0,78	0,86	0,91	0,92	2913	681	42
			60	380	17	19	69,5	71,2	71,7	70,9	0,86	0,9	0,92	0,92	3475		
			460	15	17	64,7	70,5	72,4	71,9	0,77	0,84	0,88	0,9	3523			
DKM 5 K/12,5	12,5	9,2	50	380	20	23	79,0	79,0	76,2	75,0	0,81	0,88	0,91	0,92	2857	731	44
			60	380	21	24	69,3	75,6	72,3	70,6	0,84	0,9	0,92	0,92	3447		
			460	18	20	70,1	73,8	77,0	75,4	0,79	0,86	0,89	0,9	3596			
DKM 5 K/15	15	11	50	380	24	27	77,4	80,3	79,0	77,8	0,8	0,88	0,9	0,91	2862	776	48
			60	380	24	28	76,0	80,7	79,1	78,1	0,85	0,90	0,92	0,92	3447		
			460	21	23	71,5	76,1	77,1	77,6	0,78	0,86	0,89	0,9	3501			
DKM 5 K/17,5	17,5	13	50	380	28	32	76,4	78,4	75,8	77,3	0,79	0,87	0,91	0,91	2868	826	54
			60	380	28	32	82,8	85,7	85,9	85,6	0,85	0,9	0,92	0,92	3446		
			460	24	27	70,9	76,6	77,0	77,7	0,77	0,84	0,88	0,89	3514			
DKM 5 K/20	20	15	50	380	31	35	79,7	81,3	76,9	77,1	0,84	0,9	0,92	0,93	2825	876	58
			60	380	31	36	75,3	77,5	76,4	74,7	0,88	0,91	0,92	0,92	3414		
			460	27	30	73,8	77,3	78,3	77,8	0,81	0,87	0,9	0,91	3488			
DKM 5 K/25	25	18,5	50	380	38	44	84,0	81,5	80,8	78,9	0,77	0,86	0,9	0,91	2854	876	58
			60	380	39	44	79,3	77,6	77,1	77,7	0,85	0,9	0,92	0,92	3433		
			460	33	37	78,2	79,5	81,9	81,8	0,73	0,83	0,87	0,89	3499			
DKM 5 K/30	30	22	50	380	48	55	7,7	81,3	81,4	77,9	0,67	0,8	0,86	0,89	2861	876	58
			60	380	47	54	79,4	79,8	78,5	77,2	0,82	0,88	0,9	0,91	3453		
			460	43	48	73,8	80,2	80,3	80,2	0,63	0,74	0,82	0,84	3497			

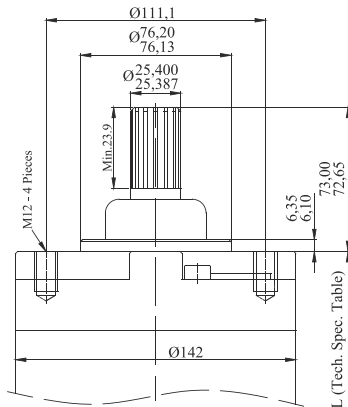
KABLO ÖLÇÜ TABLOSU / CABLE DIMENSION TABLE

Motor Tipi Motor Type	Max. Eksenel Yük Thrust Force Axiale Kn	Kablo / Cable mm ²				Kablo Boyu Cable Lenght (M)
		380 V 50 Hz / 400 V 50 Hz / 415 V 50 Hz 380 V 60 Hz / 460 V 60 Hz		230 V 50 Hz / 230 V 60 Hz		
		Direkt Direct	Yıldız Üçgen Star Delta	Direkt Direct	Yıldız Üçgen Star Delta	
DKM 5 K/5,5	32	3 x 2,5	2 x (3 x 2,5)	3 x 2,5	2 x (3 x 2,5)	2,5
DKM 5 K/7,5	32	3 x 2,5	2 x (3 x 2,5)	3 x 2,5	2 x (3 x 2,5)	2,5
DKM 5 K/10	32	3 x 2,5	2 x (3 x 2,5)	3 x 2,5	2 x (3 x 2,5)	2,5
DKM 5 K/12,5	32	3 x 2,5	2 x (3 x 2,5)	3 x 4	2 x (3 x 2,5)	2,5
DKM 5 K/15	32	3 x 2,5	2 x (3 x 2,5)	3 x 4	2 x (3 x 2,5)	2,5
DKM 5 K/17,5	32	3 x 2,5	2 x (3 x 2,5)	3 x 4	2 x (3 x 2,5)	2,5
DKM 5 K/20	32	3 x 2,5	2 x (3 x 2,5)	3 x 6	2 x (3 x 2,5)	3,5
DKM 5 K/25	32	3 x 4	2 x (3 x 2,5)	3 x 10	2 x (3 x 4)	3,5
DKM 5 K/30	32	3 x 4	2 x (3 x 2,5)	3 x 10	2 x (3 x 4)	3,5



PERFORMANS TABLOSU / PERFORMANCE TABLE

Motor Tipi Motor Type	Güç Power		Eksenel Yük kN	Voltaj Voltage V	Akım (A) Current (A)		Verim (η%) Efficiency (η%)			Güç Faktörü(COSφ) Power Factor (COSφ)			Devir Rotation (RPM)	Uzunluk Lenght mm	Ağırlık Weight kg
	kW	Hp			I _N	I _A	50%	75%	100%	50%	75%	100%			
DKM 6/5,5	4	5,5	20	380	10,2	39,4	67	71	71	63,0	71	84	2770	649	40,0
				400	9,8	37,8	68	72	72	59,0	67	82	2785		
				415	9,5	36,9	68	72	72	57,5	66	81	2795		
DKM 6/7,5	5,5	7,5	20	380	13,3	52,7	70	73	75	63,0	71	84	2780	678	43,5
				400	12,8	50,6	71	74	76	59,0	67	82	2795		
				415	12,3	48,7	72	75	77	57,5	66	81	2805		
DKM 6/10	7,5	10	20	380	17,2	66,4	77	79	79	63,0	71	84	2790	758	50,0
				400	16,5	63,8	79	80	80	59,0	67	82	2805		
				415	16,1	62,2	79	80	80	57,5	66	81	2815		
DKM 6/12,5	9,3	12,5	20	380	20,8	80,3	80	81	81	63,0	71	84	2850	800	55,0
				400	10,2	78,1	80	81	81	59,0	67	82	2855		
				415	19,5	75,3	81	82	82	57,5	66	81	2865		
DKM 6/15	11	15	20	380	23,7	91,6	81	82	82	67,0	75	86	2810	851	60,0
				400	22,8	88,0	82	83	83	63,0	71	84	2825		
				415	22,2	85,9	82	83	83	61,0	69	83	2835		
DKM 6/17,5	13	17,5	20	380	28,7	110,9	80	81	81	65,0	73	85	2820	911	65,0
				400	27,6	106,6	81	82	82	61,0	69	83	2835		
				415	26,6	107,2	82	83	83	59,0	67	82	2845		
DKM 6/20	15	20	20	380	33,1	127,9	80	81	81	65,0	73	85	2850	973	72,0
				400	32,2	124,5	80	81	81	61,0	69	83	2855		
				415	31,0	120,0	81	82	82	59,0	67	82	2865		
DKM 6/25	18,5	25	20	380	41,8	161,6	80	81	81	61,0	69	83	2850	1006	76,0
				400	40,2	155,4	81	82	82	57,5	66	81	2865		
				415	38,8	149,8	82	83	83	56,5	65	80	2875		
DKM 6/30	22	30	20	380	48,5	187,6	81	82	82	63,0	71	84	2860	1106	87,0
				400	46,7	180,3	82	83	83	59,0	67	82	2875		
				415	45,0	173,9	83	84	84	57,5	66	81	2885		
DKM 6/35	26,5	35	26,5	380	56,4	217,9	83	84	84	65,0	73	85	2870	1217	98,0
				400	54,9	212,0	83	84	84	61,0	69	83	2885		
				415	52,9	204,4	84	85	85	59,0	67	82	2895		
DKM 6/40	30	40	26,5	380	64,6	249,7	82	83	83	65,0	73	85	2880	1247	103,0
				400	62,1	240,0	83	84	84	61,0	69	83	2895		
				415	59,9	231,4	84	85	85	59,0	67	82	2905		
DKM 6/50	37	50	26,5	380	79,7	315,6	80	81	83	65,0	73	85	2890	1347	110,0
				400	76,7	303,3	81	82	84	61,0	69	83	2905		
				415	74,7	288,8	83	84	84	59,0	67	82	2915		



KABLO ÖLÇÜ TABLOSU / CABLE DIMENSION TABLE

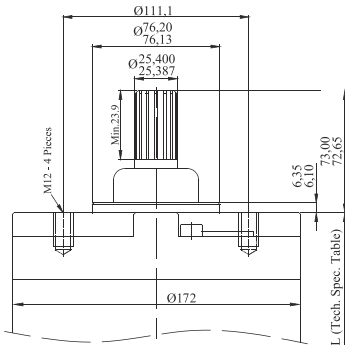
Motor Tipi Motor Type	Max. Eksenel Yük Thrust Force Axiale Kn	Kablo / Cable mm ²			
		Direkt Direct		Yıldız Üçgen Star Delta	
		mm ²	n	mm ²	n
DKM 6/5,5	20	3 x 2,5	1	3 x 2,5	2
DKM 6/7,5	20	3 x 2,5	1	3 x 2,5	2
DKM 6/10	20	3 x 2,5	1	3 x 2,5	2
DKM 6/12,5	20	3 x 2,5	1	3 x 2,5	2
DKM 6/15	20	3 x 4	1	3 x 4	2
DKM 6/17,5	20	3 x 4	1	3 x 4	2
DKM 6/20	20	3 x 4	1	3 x 4	2
DKM 6/25	20	3 x 4	1	3 x 4	2
DKM 6/30	20	3 x 6	1	3 x 6	2
DKM 6/35	20	3 x 6	1	3 x 6	2
DKM 6/40	20	3 x 6	2	3 x 6	2
DKM 6/50	20	3 x 6	2	3 x 6	2

PERFORMANS TABLOSU / PERFORMANCE TABLE

Motor Tipi Motor Type	Güç Power		Eksenel Yük kN	Voltaj Voltage V	Akım (A) Current (A)		Verim (η%) Efficiency (η%)			Güç Faktörü(COSφ) Power Factor (COSφ)			Devir Rotation (RPM)	Uzunluk Lenght mm	Ağırlık Weight kg
	kW	Hp			I _N	I _A	50%	75%	100%	50%	75%	100%			
DKM 7/30	22	30	45	380	46,3	235	83	84	84	76	82	86	2880	890	86,0
				400	44,5	225	82	84	85	75	81	85	2900		
				415	43,4	219	81	84	85	70	77	83	2910		
DKM 7/35	26,5	35	45	380	55,1	279	84	85	85	76	82	86	2880	940	91,0
				400	52,9	269	83	85	85	75	81	85	2900		
				415	51,6	262	82	85	86	70	77	83	2910		
DKM 7/40	30	40	45	380	62,4	312	85	86	85	66	82	86	2880	980	103,0
				400	59,2	300	84	86	86	75	81	85	2900		
				415	57,8	294	83	86	87	70	77	83	2910		
DKM 7/50	37	50	45	380	74,3	377	85	86	86	78	85	88	2880	1060	113,0
				400	72,2	366	84	86	86	75	82	86	2900		
				415	70,4	358	83	86	87	71	80	84	2910		
DKM 7/60	45	60	45	380	90,3	459	85	86	86	76	84	88	2870	1139	127,0
				400	87,8	446	84	86	86	75	83	86	2890		
				415	85,7	435	83	86	87	74	80	84	2900		
DKM 7/70	52	70	45	380	105,6	537	85	86	86	78	83	87	2860	1218	138,0
				400	102,7	522	85	86	86	76	82	85	2880		
				415	100,2	509	83	86	87	73	79	83	2890		
DKM 7/75	55	75	45	380	112,9	554	85	85	84	76	84	88	2900	1250	138,0
				400	109,8	540	84	85	84	75	83	86	2905		
				415	107,1	518	83	85	85	74	80	84	2910		

KABLO ÖLÇÜ TABLOSU / CABLE DIMENSION TABLE

Motor Tipi Motor Type	Max. Eksenel Yük Thrust Force Axiale Kn	Kablo / Cable mm ²			
		Direkt Direct		Yıldız Üçgen Star Delta	
		mm ²	n	mm ²	n
DKM7/30	45	3 x 10	1	3 x 10	2
DKM7/35	45	3 x 10	1	3 x 10	2
DKM7/40	45	3 x 10	1	3 x 10	2
DKM7/50	45	3 x 10	1	3 x 10	2
DKM7/60	45	3 x 16	1	3 x 16	2
DKM7/70	45	3 x 16	1	3 x 16	2
DKM7/75	45	3 x 16	1	3 x 16	2



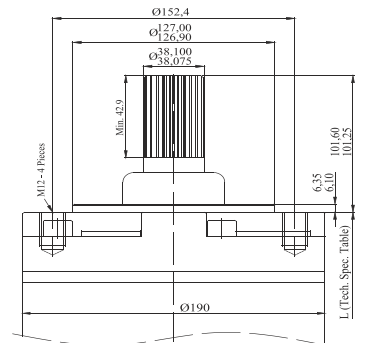
PERFORMANS TABLOSU / PERFORMANCE TABLE

Motor Tipi Motor Type	Güç Power		Eksenel Yük kN	Voltaj Voltage V	Akım (A) Current (A)		Verim (η%) Efficiency (η%)			Güç Faktörü(COSφ) Power Factor (COSφ)			Devir Rotation (RPM)	Uzunluk Lenght mm	Ağırlık Weight kg
	kW	Hp			I _n	I _A	50%	75%	100%	50%	75%	100%			
DKM 8/40	30	40	45	380	61,7	239	82	83	83	74,5	80	89	2850	1056	129,0
				400	59,3	229	83	84	84	68,5	76	87	2865		
				415	57,8	223	83	84	84	67,0	75	86	2875		
DKM 8/50	37	50	45	380	74,3	287	84	85	85	74,5	80	89	2860	1116	138,0
				400	71,4	276	85	86	86	68,5	76	87	2875		
				415	69,6	269	85	86	86	67,0	75	86	2885		
DKM 8/60	45	60	45	380	90,4	349	84	85	85	74,5	80	89	2860	1201	152,0
				400	86,8	336	85	86	86	68,5	76	87	2875		
				415	84,6	327	85	86	86	67,0	75	86	2885		
DKM 8/70	52	70	45	380	103,3	399	84	85	85	77,0	83	90	2850	1286	170,0
				400	99,2	383	85	86	86	71,5	78	88	2865		
				415	96,7	374	85	86	86	68,5	76	87	2875		
DKM 8/75	55	75	45	380	110,5	427	83	84	84	77,0	83	90	2850	1286	170,0
				400	107,4	415	83	84	84	71,5	78	88	2865		
				415	103,5	400	84	85	85	68,5	76	87	2875		
DKM 8/80	60	80	45	380	119,1	460	85	86	86	74,5	80	89	2850	1341	185,0
				400	115,7	447	85	86	86	68,5	76	87	2865		
				415	112,9	436	85	86	86	67,0	75	86	2875		
DKM 8/90	67	90	45	380	134,6	520	84	85	85	74,5	80	89	2850	1366	186,0
				400	129,3	499	85	86	86	68,5	76	87	2865		
				415	126,0	487	85	86	86	67,0	75	86	2875		
DKM 8/100	75	100	45	380	150,7	582	83	84	84	77,0	83	89	2850	1391	195,0
				400	144,7	559	84	85	85	71,5	78	87	2865		
				415	141,1	545	84	85	85	68,5	76	86	2875		
DKM 8/110	81	110	55	380	162,7	629	84	85	85	74,0	80	90	2855	1471	210,0
				400	156,3	604	85	86	86	68,5	76	88	2860		
				415	152,4	589	85	86	86	67,0	75	87	2865		
DKM 8/125	92	125	55	380	184,8	714	84	85	85	74,0	80	89	2820	1536	212,0
				400	177,5	686	85	86	86	68,5	76	87	2835		
				415	173,1	669	85	86	86	67,0	75	86	2850		



KABLO ÖLÇÜ TABLOSU / CABLE DIMENSION TABLE

Motor Tipi Motor Type	Max. Eksenel Yük Thrust Force Axiale Kn	Kablo / Cable mm ²			
		Direkt Direct		Yıldız Üçgen Star Delta	
		mm ²	n	mm ²	n
DKM 8/40	45	3 x 10	1	3 x 10	2
DKM 8/50	45	3 x 10	1	3 x 10	2
DKM 8/60	45	3 x 10	1	3 x 10	2
DKM 8/70	45	3 x 16	1	3 x 16	2
DKM 8/75	45	3 x 16	1	3 x 16	2
DKM 8/80	45	3 x 16	1	3 x 16	2
DKM 8/90	45	3 x 16	1	3 x 16	2
DKM 8/100	45	3 x 16	1	3 x 16	2
DKM 8/110	45	3 x 16	2	3 x 16	2
DKM 8/125	45	3 x 16	2	3 x 16	2



Firmamız teknolojik gelişmeler nedeniyle değişiklik hakkını saklı tutar.

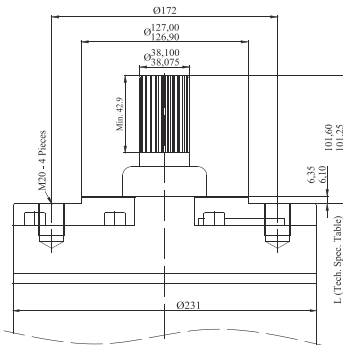
Due to continuous improvement in design we reserve the right to amend specifications or data without prior notice.

PERFORMANS TABLOSU / PERFORMANCE TABLE

Motor Tipi Motor Type	Güç Power		Eksenel Yük kN	Voltaj Voltage V	Akım (A) Current (A)		Verim (η%) Efficiency (η%)			Güç Faktörü(COSφ) Power Factor (COSφ)			Devir Rotation (RPM)	Uzunluk Lenght mm	Ağırlık Weight kg	
	kW	Hp			I _N	I _A	50%	75%	100%	50%	75%	100%				
DKM 10/110	81	110	75	380	159	615	84	85	85	76	84	91	2880	1370	256,0	
				400	153	590	85	86	86	75	80	89				2895
				415	147	569	86	87	87	70	78	88				2905
DKM 10/125	92	125	75	380	179	690	85	86	86	76	84	91	2890	1430	284,0	
				400	174	671	85	86	86	75	80	89				2905
				415	169	654	85	86	86	70	78	88				2915
DKM10/150	110	150	75	380	216	835	85	86	86	66	83	90	2890	1510	311,0	
				400	210	811	85	86	86	75	78	88				2905
				415	205	791	85	86	86	70	76	87				2915
DKM 10/175	129	175	75	380	248	957	86	87	87	78	84	91	2910	1610	338,0	
				400	238	919	87	88	88	75	80	89				2925
				415	232	896	87	88	88	71	78	88				2935
DKM 10/200	147	200	75	380	282	1090	86	87	87	76	84	91	2900	1740	370,0	
				400	274	1059	86	87	87	75	80	89				2915
				415	264	1020	87	88	88	74	78	88				2925
DKM10/225	166	225	75	380	322	1245	85	86	86	78	84	91	2890	1820	400,0	
				400	309	1196	86	87	87	76	80	89				2905
				415	302	1165	86	87	87	73	78	88				2915
DKM 10/250	185	250	75	380	359	1388	85	86	86	76	84	91	2895	1820	405,0	
				400	349	1348	85	86	86	75	80	89				2905
				415	336	1299	86	87	87	74	78	88				2915

KABLO ÖLÇÜ TABLOSU / CABLE DIMENSION TABLE

Motor Tipi Motor Type	Max. Eksenel Yük Thrust Force Axiale Kn	Kablo / Cable mm ²			
		Direkt Direct		Yıldız Üçgen Star Delta	
		mm ²	n	mm ²	n
DKM 10/110	75	3 x 25	1	3 x 25	2
DKM 10/125	75	3 x 25	1	3 x 25	2
DKM10/150	75	3 x 25	1	3 x 25	2
DKM 10/175	75	3 x 25	2	3 x 25	2
DKM 10/200	75	3 x 25	2	3 x 25	2
DKM10/225	75	3 x 25	2	3 x 25	2
DKM 10/250	75	3 x 25	2	3 x 25	2

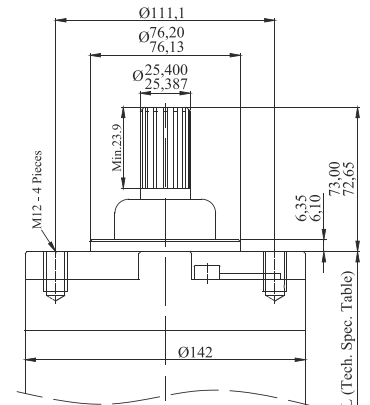


PERFORMANS TABLOSU / PERFORMANCE TABLE

Motor Tipi Motor Type	Güç Power		Eksenel Yük kN	Voltaj Voltage V	Akım (A) Current (A)		Verim (η%) Efficiency (η%)			Güç Faktörü(COSφ) Power Factor (COSφ)			Devir Rotation (RPM)	Uzunluk Lenght mm	Ağırlık Weight kg
	kW	Hp			I _N	I _A	50%	75%	100%	50%	75%	100%			
DKM 6/5,5	4	5,5	20	460	8,4	44	69	70	70	65	74	85	3350	649	40,0
DKM 6/7,5	5,5	7,5	20	460	11,3	59	71	72	72	65	74	85	3360	678	43,5
DKM 6/10	7,5	10	20	460	14,2	73	77	78	78	65	74	85	3380	758	50,0
DKM 6/12,5	9,3	12,5	20	460	17,4	90	78	79	79	65	74	85	3390	800	55,0
DKM 6/15	11	15	20	460	19,6	101	80	81	81	67	76	87	3400	851	60,0
DKM 6/17,5	13	17,5	20	460	23,4	121	80	81	81	66	75	86	3410	911	65,0
DKM 6/20	15	20	20	460	27,3	142	79	80	80	66	75	86	3440	973	72,0
DKM 6/25	18,5	25	20	460	34,5	178	79	80	80	64	73	84	3450	1006	76,0
DKM 6/30	22	30	20	460	40,1	207	80	81	81	65	74	85	3560	1106	87,0
DKM 6/35	26,5	35	26,5	460	47,1	242	81	82	82	66	75	86	3470	1217	98,0
DKM 6/40	30	40	26,5	460	53,4	272	81	82	82	66	75	86	3480	1247	103,0
DKM 6/50	37	50	26,5	460	66,6	341	80	81	81	66	75	86	3490	1347	110,0

KABLO ÖLÇÜ TABLOSU / CABLE DIMENSION TABLE

Motor Tipi Motor Type	Max. Eksenel Yük Thrust Force Axiale Kn	Kablo / Cable mm ²			
		Direkt Direct		Yıldız Üçgen Star Delta	
		mm ²	n	mm ²	n
DKM 6/5,5	20	3 x 2,5	1	3 x 2,5	2
DKM 6/7,5	20	3 x 2,5	1	3 x 2,5	2
DKM 6/10	20	3 x 2,5	1	3 x 2,5	2
DKM 6/12,5	20	3 x 2,5	1	3 x 2,5	2
DKM 6/15	20	3 x 4	1	3 x 4	2
DKM 6/17,5	20	3 x 4	1	3 x 4	2
DKM 6/20	20	3 x 4	1	3 x 4	2
DKM 6/25	20	3 x 4	1	3 x 4	2
DKM 6/30	20	3 x 6	1	3 x 6	2
DKM 6/35	20	3 x 6	1	3 x 6	2
DKM 6/40	20	3 x 6	2	3 x 6	2
DKM 6/50	20	3 x 6	2	3 x 6	2

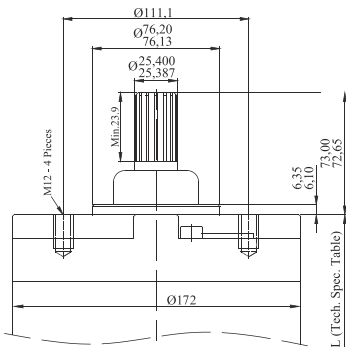


PERFORMANS TABLOSU / PERFORMANCE TABLE

Motor Tipi Motor Type	Güç Power		Eksenel Yük kN	Voltaj Voltage V	Akım (A) Current (A)		Verim (η%) Efficiency (η%)			Güç Faktörü(COSφ) Power Factor (COSφ)			Devir Rotation (RPM)	Uzunluk Lenght mm	Ağırlık Weight kg
	kW	Hp			I _N	I _A	50%	75%	100%	50%	75%	100%			
DKM 7/30	22	30	45	460	38,2	194	82	83	83	77	83	87	3480	890	86,0
DKM 7/35	26,5	35	45	460	45,0	230	83	84	84	77	83	87	3480	940	91,0
DKM 7/40	30	40	45	460	52,1	260	84	85	84	77	83	87	3480	980	103,0
DKM 7/50	37	50	45	460	61,4	311	84	85	85	79	86	89	3480	1060	113,0
DKM 7/60	45	60	45	460	74,7	379	84	85	85	77	85	89	3470	1139	127,0
DKM 7/70	52	70	45	460	87,2	443	84	85	85	79	84	88	3460	1218	138,0

KABLO ÖLÇÜ TABLOSU / CABLE DIMENSION TABLE

Motor Tipi Motor Type	Max. Eksenel Yük Thrust Force Axiale Kn	Kablo / Cable mm ²			
		Direkt Direct		Yıldız Üçgen Star Delta	
		mm ²	n	mm ²	n
DKM7/30	45	3 x 10	1	3 x 10	2
DKM7/35	45	3 x 10	1	3 x 10	2
DKM7/40	45	3 x 10	1	3 x 10	2
DKM7/50	45	3 x 10	1	3 x 10	2
DKM7/60	45	3 x 16	1	3 x 16	2
DKM7/70	45	3 x 16	1	3 x 16	2
DKM7/75	45	3 x 16	1	3 x 16	2

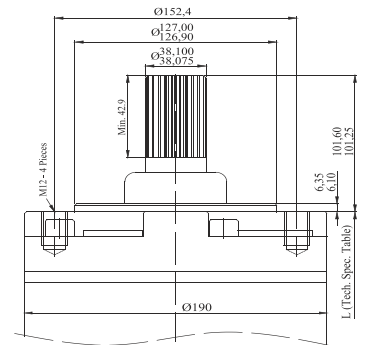


PERFORMANS TABLOSU / PERFORMANCE TABLE

Motor Tipi Motor Type	Güç Power		Eksenel Yük kN	Voltaj Voltage V	Akım (A) Current (A)		Verim (η%) Efficiency (η%)			Güç Faktörü(COSφ) Power Factor (COSφ)			Devir Rotation (RPM)	Uzunluk Lenght mm	Ağırlık Weight kg
	kW	Hp			I _N	I _A	50%	75%	100%	50%	75%	100%			
DKM 8/40	30	40	45	460	51,0	258	83	83	82	82	86	90	3450	1056	129,0
DKM 8/50	37	50	45	460	61,4	308	85	85	84	82	86	90	3460	1116	138,0
DKM 8/60	45	60	45	460	74,8	382	85	85	84	82	86	90	3460	1201	152,0
DKM 8/70	52	70	45	460	85,3	431	85	85	84	83	87	91	3450	1286	170,0
DKM 8/75	55	75	45	460	90,2	458	85	85	84	83	87	91	3450	1286	170,0
DKM 8/80	60	80	45	460	99,6	509	85	85	84	82	86	90	3450	1341	185,0
DKM 8/90	67	90	45	460	111,2	563	85	85	84	82	86	90	3450	1366	186,0
DKM 8/100	75	100	45	460	123,1	625	85	85	84	82	86	91	3450	1391	195,0
DKM 8/110	81	110	55	460	134,4	681	85	85	84	82	86	90	3430	1471	210,0
DKM 8/125	92	125	55	460	152,8	770	85	85	84	82	86	90	3430	1536	212,0

KABLO ÖLÇÜ TABLOSU / CABLE DIMENSION TABLE

Motor Tipi Motor Type	Max. Eksenel Yük Thrust Force Axiale Kn	Kablo / Cable mm ²			
		Direkt Direct		Yıldız Üçgen Star Delta	
		mm ²	n	mm ²	n
DKM 8/40	45	3 x 10	1	3 x 10	2
DKM 8/50	45	3 x 10	1	3 x 10	2
DKM 8/60	45	3 x 10	1	3 x 10	2
DKM 8/70	45	3 x 16	1	3 x 16	2
DKM 8/75	45	3 x 16	1	3 x 16	2
DKM 8/80	45	3 x 16	1	3 x 16	2
DKM 8/90	45	3 x 16	1	3 x 16	2
DKM 8/100	45	3 x 16	1	3 x 16	2
DKM 8/110	45	3 x 16	2	3 x 16	2
DKM 8/125	45	3 x 16	2	3 x 16	2



Firmamız teknolojik gelişmeler nedeniyle değişiklik hakkını saklı tutar.

Due to continuous improvement in design we reserve the right to amend specifications or data without prior notice.

PERFORMANS TABLOSU / PERFORMANCE TABLE

Motor Tipi Motor Type	Güç Power		Eksenel Yük kN	Voltaj Voltage V	Akım (A) Current (A)		Verim (η%) Efficiency (η%)			Güç Faktörü(COSφ) Power Factor (COSφ)			Devir Rotation (RPM)	Uzunluk Lenght mm	Ağırlık Weight kg
	kW	Hp			I _N	I _A	50%	75%	100%	50%	75%	100%			
DKM 10/110	81	110	75	460	131,5	663	84	84	84	87	90	92	3490	1370	256,0
DKM 10/125	92	125	75	460	149,4	748	84	84	84	87	90	92	3500	1430	284,0
DKM 10/150	110	150	75	460	180,5	910	84	85	84	86	89	91	3500	1510	311,0
DKM 10/175	129	175	75	460	207,0	1050	85	86	85	87	90	92	3510	1610	338,0
DKM 10/200	147	200	75	460	236,0	1197	85	85	85	87	90	92	3500	1740	370,0
DKM 10/225	166	225	75	460	266,2	1347	85	85	85	87	90	92	3490	1820	400,0
DKM 10/250	185	250	75	460	297,0	1502	85	85	85	87	90	92	3490	1820	405,0

KABLO ÖLÇÜ TABLOSU / CABLE DIMENSION TABLE

Motor Tipi Motor Type	Max. Eksenel Yük Thrust Force Axiale Kn	Kablo / Cable mm ²			
		Direkt Direct		Yıldız Üçgen Star Delta	
		mm ²	n	mm ²	n
DKM 10/110	75	3 x 25	1	3 x 25	2
DKM 10/125	75	3 x 25	1	3 x 25	2
DKM 10/150	75	3 x 25	1	3 x 25	2
DKM 10/175	75	3 x 25	2	3 x 25	2
DKM 10/200	75	3 x 25	2	3 x 25	2
DKM 10/225	75	3 x 25	2	3 x 25	2
DKM 10/250	75	3 x 25	2	3 x 25	2

